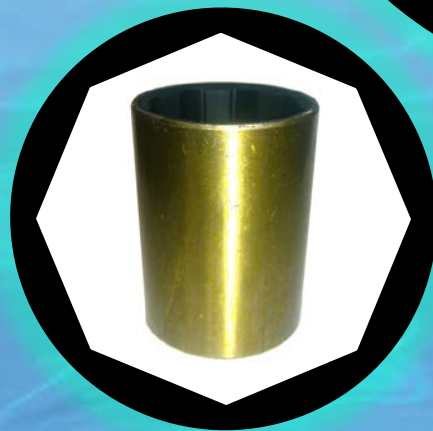
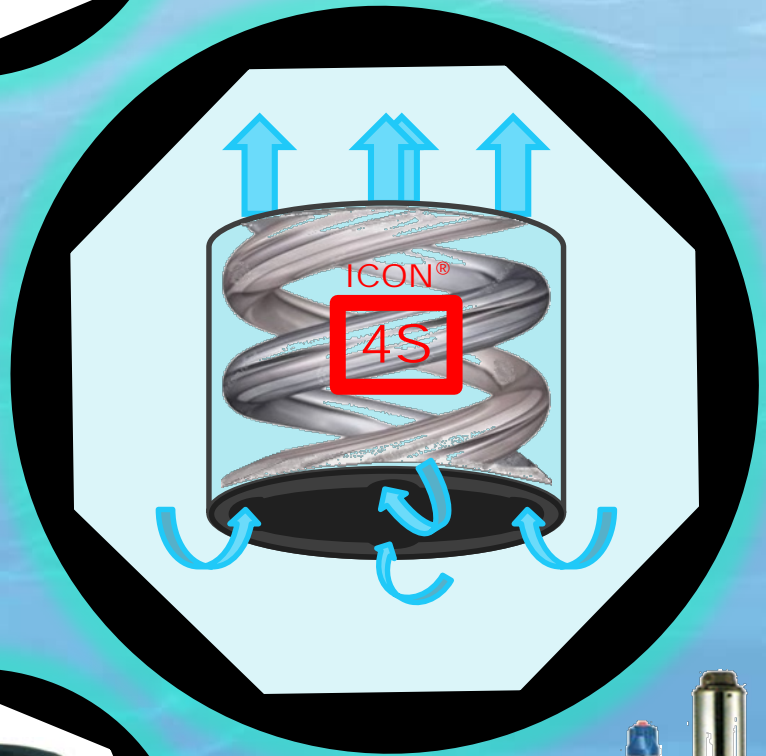
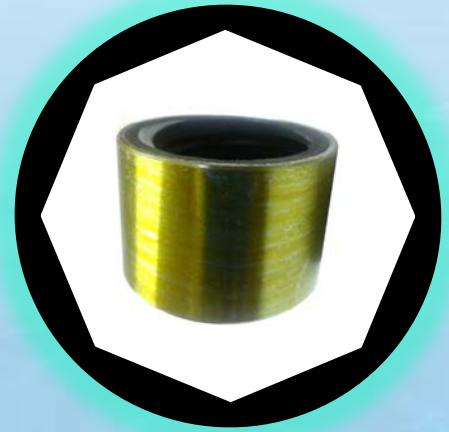
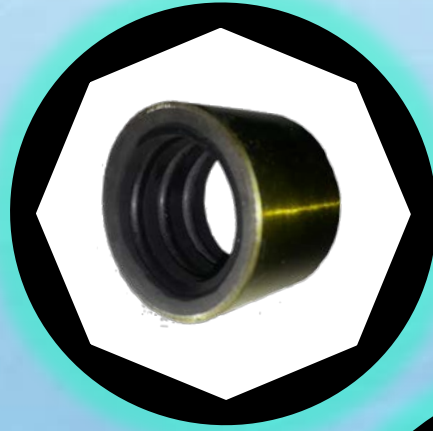




Since 1979

ICON[®]



Established in 1979, ICON is India's oldest and largest manufacturer of Rubber Bush Bearings and Neck Rings. ICON is supplying bearings to pump manufacturers, OMS's & pump maintenance companies for over 30 years. Our Rubber Bearings and Neck Rings cover a wide range of shaft diameters from **25mm to 100mm**

ICON® bearings are made from a specially compounded oil and chemical resistant nitrile rubber.

The nitrile rubber is highly resistance to wear and abrasion and is also tough and durable.



ICON® composite Neck / Wear rings are more wear resistant than Brass or Stainless Steel. Economical and longer lasting, can be machined like metal.

ICON® **4S**

Range of Bush bearings

- 4 start spiral pump bush
- Latest American Design
- Quick flushing out of sand and pebbles
- Specially formulated long lasting Nitrile rubber
- Low wear and tear
- Better shaft balance
 - Longer bush life

BUSH SIZE

35 x 24	40 x 25	45 x 20	55 x 40
36 x 14	40 x 40	45 x 35	55 x 50
36 x 15	42 x 16	47 x 40	55 x 60
36 x 20	42 x 18	48 x 20	55 x 80
36 x 30	42 x 20	48 x 40	60 x 35
36 x 24	42 x 25	50 x 40	60 x 60
38 x 14	42 x 30	50 x 50	60 x 80
38 x 15	42 x 35	52 x 35	65 x 45
38 x 24	44 x 20	54 x 40	65 x 70
38 x 26	44 x 25	54 x 50	68 x 40
38 x 40	44 x 30	54 x 60	68 x 60
39 x 40	45 x 13	54 x 80	68 x 80
40 x 20	45 x 15	55 x 30	68 x 100

Rubber Properties	ICON Specified
Density (Specific gravity)	1.25 ± 0.1
Hardness Shore A	65/75 shores A
Tensile strength	(Min) 120 kgf/cm ²
Elongation	(Min) 200%
Permanent Compression set	(Max) 20%
Co- efficient of thermal expansion	(Max) 7x10 ⁴
Bond strength (rubber lining to shell)	200 PSI (14 Kg/sq. cm)

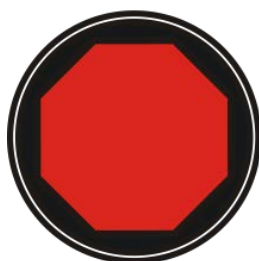
*Bush length will be as specified by customer

ICON NECK RING / WEAR RING SIZES

I.D.	O.D.	Length	I.D.	O.D.	Length	I.D.	O.D.	Length	I.D.	O.D.	Length	I.D.	O.D.	Length
60	72	10	68	86	10	83.5	92	10	83	98	10	93	105	12
70.5	80	8	70	86	10	84	92	10	84	98	10	92	105	12
65	80	10	71	86	10	85	92	10	85	98	10	94	105	12
66	80	10	72	86	10	86	92	10	86	98	10	95	105	12
67	80	10	73	86	10	85	95	12	88	98	10	96	105	12
68	80	10	74	86	10	80	96	10	92	98	10	100	110	12
69	80	10	70	88	10	81	96	10	82	98	12	100	112	12
70	80	10	70	90	10	83	96	10	80	100	10	102	115	11
71	80	10	71	90	10	84	96	10	84	105	10	95	115	12
72	80	10	72	90	10	85	96	10	85	105	10	100	115	12
66	82	10	73	90	10	86	96	10	86	105	10	100.5	115	10
67	82	10	74	90	10	87	96	10	87	105	10	90	115	12
68	82	10	75	90	10	88	96	10	88	105	10	91	115	12
69	82	10	76	90	10	80	96	11	89	105	10	92	115	12
70	82	10	77	90	10	80.5	96	11	90.2	105	10	93	115	12
70	83	10	78	90	10	81	96	11	90	105	10	94	115	12
71	83	10	78.5	90	10	81.5	96	11	91	105	10	96	115	12
72	83	10	79	90	10	82	96	11	92	105	10	97	115	12
68	84	10	80	90	10	82.5	96	11	93	105	10	98	115	12
69	84	10	81	90	10	83	96	11	94	105	10	99	115	12
70	84	10	82	90	10	84	96	11	95	105	10	100	115	12
71	84	10	84	90	10	84.5	96	11	96	105	10	101	115	12
72	84	10	74	92	10	85	96	11	84	105	12	102	115	12
73	84	10	75	92	10	85.5	96	11	85	105	12	103	115	12
74	84	10	76	92	10	86	96	11	86	105	12	104	115	12
65	85	10	77	92	10	88	96	11	87	105	12	105	115	12
70	85	10	78	92	10	84	96	12	88	105	12	97	115	14
71	85	10	79	92	10	84	96	13	89	105	12	99	115	14
72	85	10	80	92	10	80	98	10	90	105	12	102	115	14
74	85	10	82	92	10	81	98	10	91	105	12	102	115	15
75	85	10	83	92	10	82	98	10						

ICON®

India's most trusted brand since 1979
Over 10 million ICON Rubber Bush
Bearings sold.



Since 1979

Established in 1979, ICON has over three decades of experience in the manufacture of Rubber Bush Bearings for Vertical Pumps, Submersible Pumps and Bore well pumps. Smooth rubber surface, when lubricated with water, matches the extremely low friction of oil lubricated metal bearings like ball bearings. To this inherent property of rubber other essential bearing qualities are added at ICON by skilful engineering and processing. ICON Bush Bearings are resistant to wear, corrosion and swelling in water. They absorb shock and vibration. Their grooves are designed for optimum water flow to cushion the shaft. and their strong bonding is fail-safe.



Since 1979

ICON INDIA

C-5, Mahalaxmi Industrial Estate, Vasai (East),
District: Palghar, Maharashtra, INDIA 401 210

e-mail: icongmp@vsnl.com